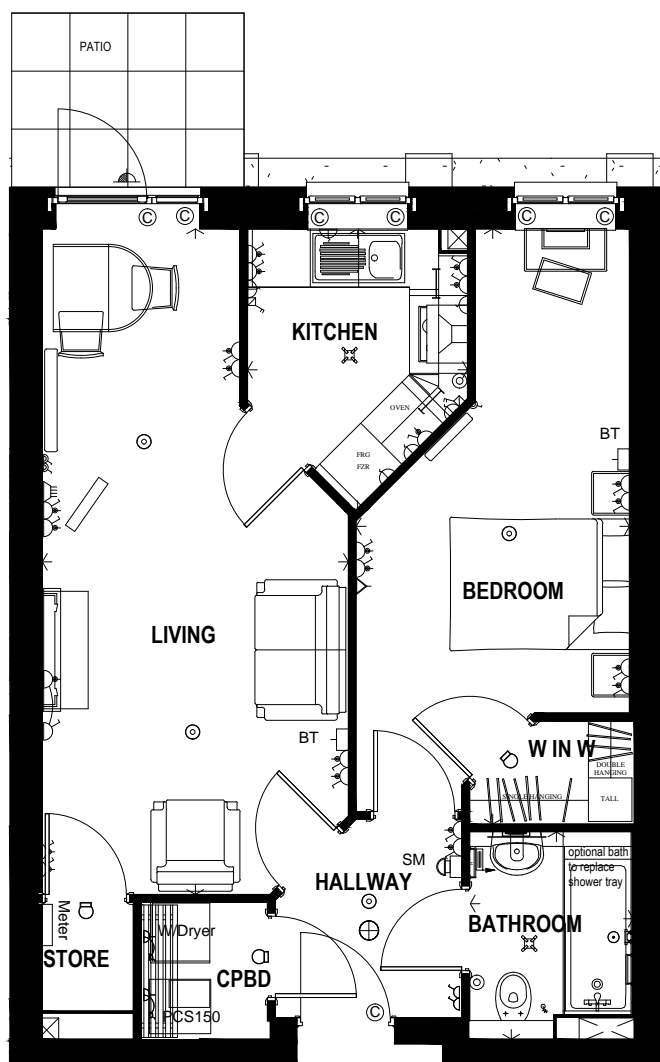


Charlotte Court

Mill Road, Ainsdale APARTMENT DETAILS



KEY

- Private patio lighting
- 4 Lamp spotlight
- Pelmet Light fitting
- Ceiling light - pendant
- Batten Lampholder
- Bathroom strip light/shaver socket
- Double switch socket outlet
- Double switch socket outlet (kitchen)
- Cooker control with switch
- Single socket with switched fuse spur
- Television aerial/satellite socket
- Socket for optional fireplace with remote switch
- Telephone outlet
- Speech module/security panel
- Optical smoke detector/sounder
- Emergency pull chord
- Fan heater
- Convactor heater
- Panel Heater
- TRS FRG FZR Tray space, fridge & freezer positions
- Heated towel rail
- Thermostatic shower valve, with flexible hose & sliding shower rail
- Alarm Contacts
- Double Fused Spur

Apartment no. 10

Room Name	Width	Depth	Width (sq.ft)	Depth (sq.ft)
BEDROOM	2825	6148	9' - 3"	20' - 2"
KITCHEN	2273	2910	7' - 5 1/2"	9' - 6 1/2"
LIVING	3163	6878	10' - 4 1/2"	22' - 7"

500/10

AREA :-

51.53 m² 554.67 ft²

Measured to finished plasterboard
faces disregarding inner walls

APARTMENT NUMBER:10

RETIREMENT LIVING: 1 BEDROOM
APARTMENT TYPE

FEATURES: PATIO, WALK IN WARDROBE

ASPECT: NORTH WEST

For Mr/Mrs:

Price:

Unit:

Estimated Service Charge:

Ground Rent:

Date:

Signed:

McCarthy & Stone Retirement Lifestyles Limited, Unit 3, Edward Court,
Broadheath, Altrincham, Cheshire, WA14 5GL.

www.mccarthyandstone.co.uk


McCarthy & Stone
The UK's leading retirement housebuilder

Although every effort has been made to ensure accuracy, exact room dimensions may vary during the course of construction and no responsibility can be accepted for any mis-statement in this leaflet, which is not a contract nor forms any part of any contract. The company also reserves the right to alter specification without notice. All information correct at time of going to press.

February 2016