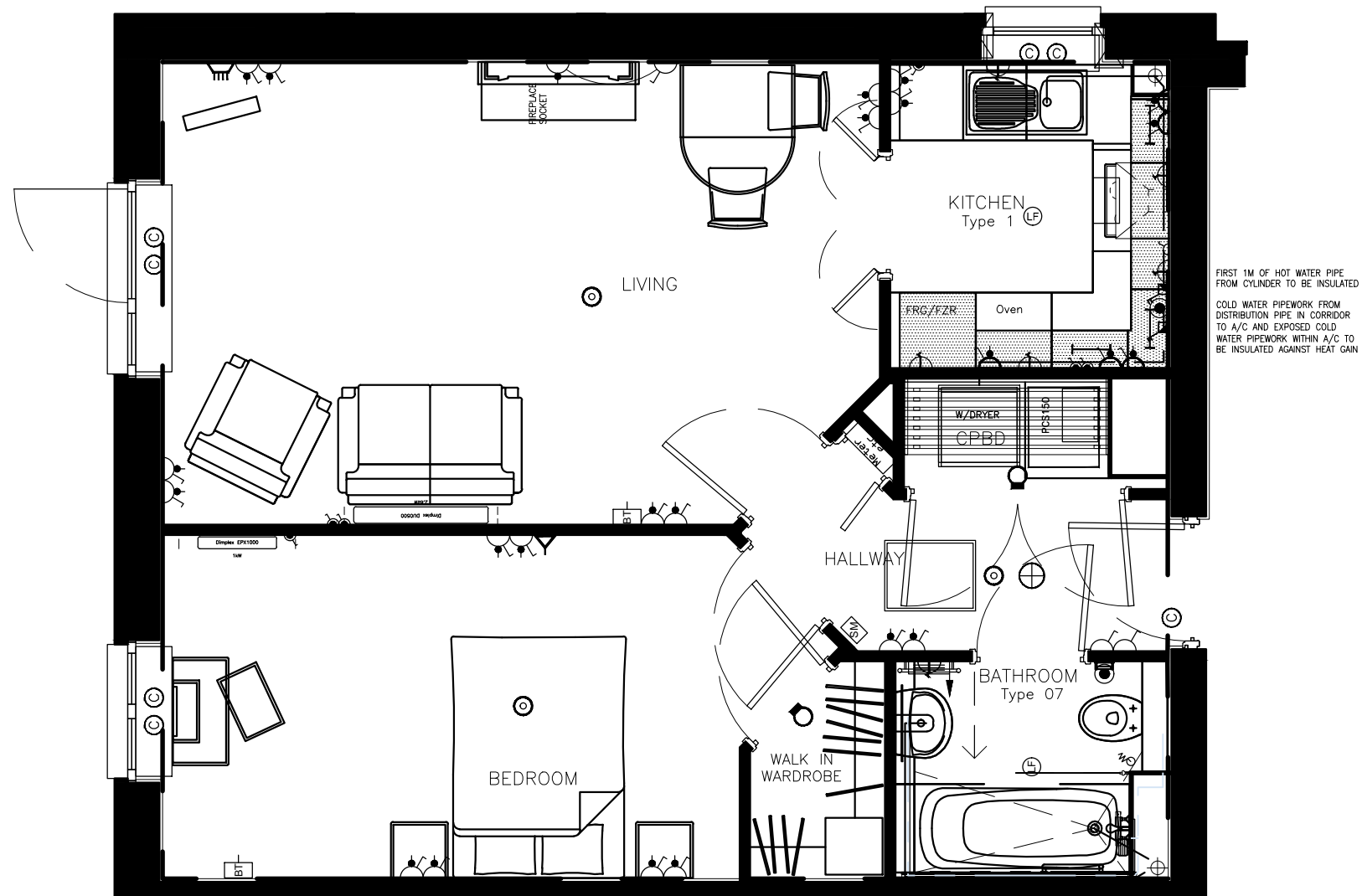


551.33 ft²
51.22 m²
measured to finished
plasterboard faces
disregarding inner walls

By:



LEGEND		
	LIGHT SWITCHES - ONE WAY ONE WAY WITH NEON INDICATOR ONE WAY ILLUMINATED TWO WAY ILLUMINATED	
	PELMET LIGHT	
	WALL LIGHT	
	CEILING LIGHTS - PENDANT BULKHEAD	
	CEILING MOUNTED LIGHT FITTING - KITCHEN/BATHROOM/SHOWER	
	BATTEN LAMPHOLDER	
	BATHROOM STRIP LIGHT WITH SHAVER SOCKET	
	SWITCHED SOCKET OUTLETS - SINGLE DOUBLE	
	SWITCHED SOCKET OUTLETS - SINGLE DOUBLE HIGH LEVEL - ABOVE WORKTOP	
	FRIDGE SOCKET WITH REMOTE NEON SWITCH	
	CABLE OUTLET AND JUNCTION BOX	
	SWITCHED SPUR WITH CABLE OUTLET AND NEON INDICATOR	
	SWITCHED UNSWITCHED SPUR POINT	
	COOKER CONTROL COOKER CONTROL WITH SOCKET	
	CONSUMER UNIT	
	TELEVISION TELEVISION / VHF AERIAL SATELLITE SOCKET	
	SOCKET WITH REMOTE SWITCH FOR OPTIONAL FIREPLACE	
	BT TELEPHONE OUTLET	
	ENTRY PHONE / SPEECH MODULE / SECURITY PANEL	
	PROGRAMMABLE ROOM THERMOSTAT	
	ROOM THERMOSTAT (1500mm FROM FFL ABOVE LIGHT SWITCHES)	
	DOOR BELL / PUSH BUTTON	
	SECURITY MAGNETIC CONTACT	
	OPTICAL SMOKE DETECTOR / SOUNDER	
	EMERGENCY PULL CORD	
	VENTILATION BOOST BUTTON	
TRS	FRG	FZR
	ELECTRIC WINDOW WINDER SWITCH	

SALES
Apartment No. 1



© McCarthy & Stone Retirement Lifestyles Limited

Other Features: Walk In Wardrobe, Patio

Living	18'-7" max x 12' max	5665mm max x 3655mm max
Kitchen	7'-3" max x 7'-10" max	2200mm max x 2400mm max
Bedroom	18'-9" max x 8'-11" max	5705mm max x 2715mm max
Shower	7'-1" max x 5'-8" max	2150mm max x 1715mm max

Although every effort has been made to ensure accuracy, exact room dimensions may vary during the course of construction and no responsibility can be accepted for any mis-statement on this leaflet, which is not a contract nor forms any part of any contract.

The company also reserves the right to alter specification without notice. All information correct at time of going to print.

Drawing No: 2379/201 Revision: -